

Quickdraw®

CONVEYOR SYSTEMS

Connecting Your Workplace

Quickdraw® designs and manufactures conveyor systems for factory automation. A full line of modular components, both standard and custom, are ideal for micro-electronics, automotive sub-assemblies, medical, laboratory, semiconductor, and many other applications. The company serves domestic and international markets.



LR SERIES

FULL WIDTH SLIP-ROLLER DESIGN



The many purposes of the LR Series include random orientation and sorting stations for variable assorted product sizes. The LR Series features full width slip-rollers in the same standard length options as the MR Series. The conveyor is available in three widths 7, 12, and 18 inches in the lengths listed on the back. The advantage of these rollers is the accumulation allowed prior to any work cell or operation, and can be used in all aspects of new and existing equipment lines. With extremely low back pressure, the LR Series eliminates production issues such

as shingling, jamming, and other varied product damage. Though the LR Series is an accumulating conveyor like the Quickdraw MR Conveyor, the LR also allows the product the ability to travel in any orientation.

1.800.473.8837

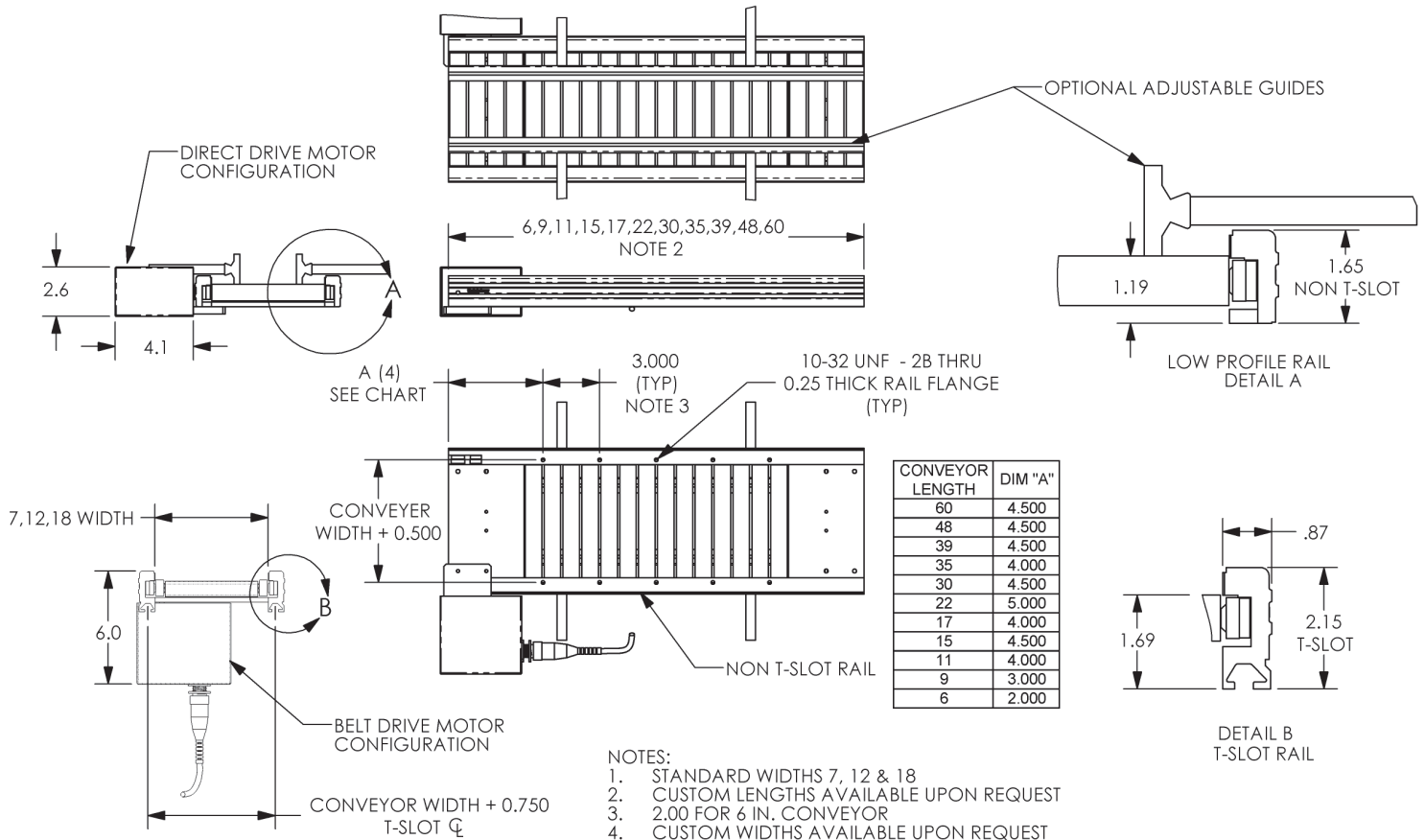
www.qdraw.com

Quickdraw®

CONVEYOR SYSTEMS

Connecting Your Workplace

LR SERIES



Speed	0-60 feet per minute
Pallet or Part Weight	40 lbs Dynamic; 25 lbs Static
Conveyor Lengths	6", 9", 11", 15", 17", 22", 30", 35", 39", 48", 60" *Custom available in 1" increments.
Power requirements	24 VDC. 110 volt plug & play available.
Integrate with	Robotic and Manual Workstations, Pick and Place, Dispense, Laser Marking, Laser Welding, Vision Inspection.
Features	Bi-directional. Capacity to accumulate pallets. Modular. Low profile.
Auxiliary Devices	Metering Stops, Sensors, Multizone, Rotates.

1.800.473.8837

www.qdraw.com